

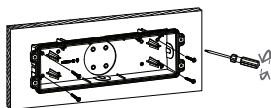
## EV-MERCURY-CASE(-B)

Weatherproof Case for Mercury

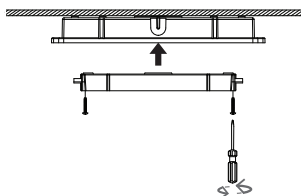
The Mercury IP65 Case is designed for Mercury emergency exits. The case is suitable for demanding environments providing weather proofing, impact resistance and vandal-proof features. Note: Be careful when installing in direct sunlight to ensure that the internal case temperature does not exceed the maximum ambient temperature of the installed exit sign.

### CEILING MOUNT INSTALLATION

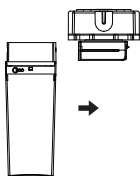
- 1 Locate suitable mounting position and affix Mercury IP65 Case to a flat surface at the indicated mounting locations. Fasten with appropriate fixings for the mounting surface.



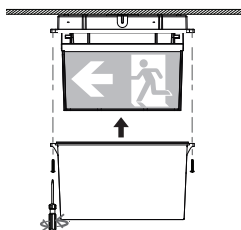
- 2 With base mounted affix the mounting bracket included with the Mercury Exit to the base as shown below.



- 3 With the mounting bracket and base assembled wire the fitting and install the Mercury body by sliding onto the installed mounting bracket.

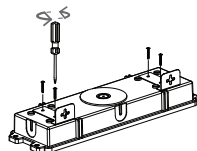


- 4 Fix the decals provided with the Mercury IP65 Case (Note: These decals are made of polycarbonate and are suited for higher temperatures). Complete assembly by installing outer casing and fastening to base.

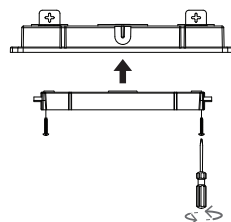


### WALL MOUNT INSTALLATION

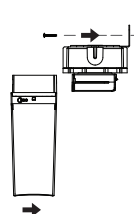
- 1 Attach wall mounting brackets (included) to the top of the IP65 case.



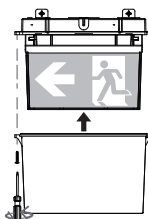
- 2 Affix mounting bracket to base.



- 3 Mount assembly to wall. Fasten with appropriate fixings for the mounting surface, wire and attach Mercury body by sliding onto installed bracket.



- 4 Fix the decals provided with the Mercury IP65 Case (Note: These decals are made of polycarbonate and are suited for higher temperatures). Complete assembly by installing outer casing and fastening to base.



## EV-MERCURY-CASE(-B)

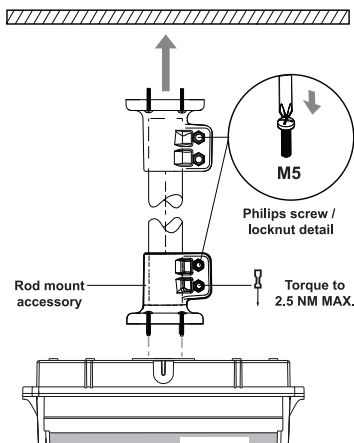
### Weatherproof Case for Mercury

### RODMOUNT INSTALLATION

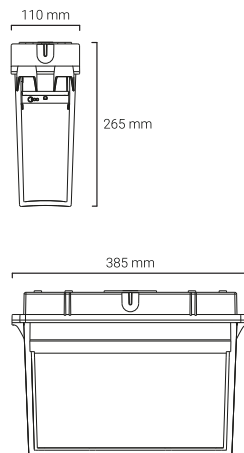
A 25mm tube is to be used, pushed firmly on both ends and fastened with M5 cap screws and locknuts.

NOTE: DO NOT over-tighten screws when mounting the rod mount to the Mercury IP65 Case.

The rod mount is suitable with tubes ranging from 0-2 metres in length. Weight on the rod must not exceed 8kg.



### DIMENSIONS



### ORDERING INFORMATION

SKU	Product code	Product number	Description
03922	EV-MERCURY-CASE	9336462039229	Weatherproof Case for Mercury
12001	EV-MERCURY-CASE-B	9336462120019	Weatherproof Case for Mercury - Black

### ACCESSORIES

SKU	Product code	Description
01990	EV-RODMOUNT-WHT	Rod Mount Kit White
02004	EV-RODMOUNT-BLK	Rod Mount Kit Black

### WARRANTY STATEMENT

Ektor products are distributed in Australia and New Zealand by Evolt Pty Ltd (Evolt). The Australian Consumer Law as well as other Australian laws guarantee certain conditions, warranties and undertakings, and give you other legal rights, in relation to the quality and fitness for purpose of Ektor products sold in Australia. In Australia, our goods come with guarantees that cannot be excluded under the Australian Consumer Law. You are entitled to a replacement or refund for a major failure and compensation for any other reasonably foreseeable loss or damage. You are also entitled to have the goods repaired or replaced if the goods fail to be of acceptable quality and the failure does not amount to a major failure. What constitutes a major failure is set out in the Australian Consumer Law. Nothing in this Warranty purports to modify or exclude the conditions, warranties and undertakings, and other legal rights, under the Australian Competition and Consumer Act and other Australian laws. Ektor products are warranted in Australia for a period of 12 months from the date of delivery of the product, provided that the products are properly stored, installed, used and maintained in accordance with the instructions contained within their manual. Products that have been altered in any way or used other than in accordance with their instructions are not covered by this warranty.

This warranty is not transferable and is valid only in the hands of the purchaser of the product. The warranty does not cover Ektor products other than those purchased from Evolt. Proof of purchase must be provided to Evolt with any warranty claim. Evolt recommends that the purchaser attaches their proof of purchase to their product manual. Evolt's total liability under this warranty is limited to the cost of repair or replacement of the faulty product. Evolt may satisfy its obligations under this warranty in full by repair or replacement of a faulty product. This warranty does not apply to consumable items such as lamps or batteries or other items that can be classified as consumable. For the avoidance of any doubt, any and all warranties or conditions which are not guaranteed under the Australian Competition and Consumer Act or the Australian Competition and Consumer Regulations 2010 and which are not expressly included in this Warranty as additional warranties or conditions are excluded. This Warranty does not cover loss or damage caused by wear and tear, misuse, incorrect installation or operation, failure to clean and maintain, incorrect voltage or non-authorized electrical connections, adverse external conditions (such as power surges and dips, acts of God, exposure to heat, corrosion, insect or vermin infestation), use of non-authorized or defective parts or globes, or to items that have been repaired other than by Evolt or a repairer approved by Evolt.

### TECHNICAL SUPPORT AND TROUBLESHOOTING

For further assistance in using this product, consult your nearest wholesaler or Evolt Pty Limited.