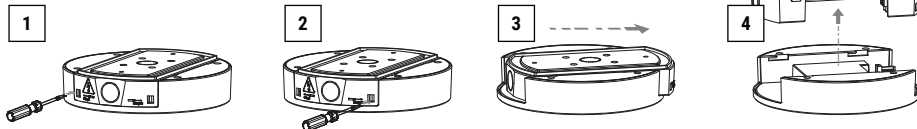


EV-LED-FIRE-SM-BASIC

18193

Remove the product from the box and inspect it for any damage. If you believe the product to be damaged or otherwise unsound, **DO NOT** install the product. Please pack it back into its box and return it to the place of purchase for replacement. If the product is satisfactory, proceed with the installation.



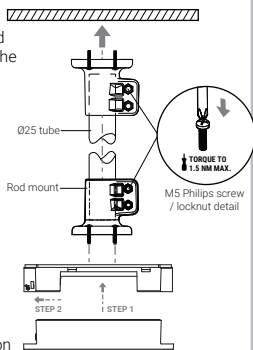
ROD MOUNT (OPTION)

The product and rod **MUST BE** dry and clean before assembly. Disassemble the product as shown above.

Ensure rod is mounted on a flat surface and fastened with the appropriate fixing. Use a tube, push it firmly in on both ends and fasten.

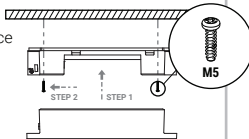
DO NOT over-tighten screws when mounting. The rod mount is suitable with tubes from 0-2 metres in length.

The weight on the rod must not exceed 8kg. Wiring can be run inside rod. Terminate the wiring and replace cover to complete the installation



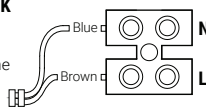
SURFACE MOUNT

Secure to a flat surface using appropriate fasteners, terminate wiring and replace cover to complete installation.



TERMINAL BLOCK

Wiring schematic for the terminal block used with the Surface Mount Ledfire Basic.



SAFETY WARNINGS

1. This product must only be installed by a licensed electrician.
2. Before commencing installation turn off and isolate the electrical supply.
3. Do not energise with product open or disassembled.
4. Supply voltages within product. Isolate supply voltages before opening or servicing.
5. There are no user serviceable parts. Do not attempt to service other parts as this will void the warranty
6. As the installer, it is your responsibility to ensure you comply to all relevant building and safety codes. For example the BCA, AS3000. Refer to application standards for the relevant rules.
7. Indicator is flashing when charging, is illuminated green when fully charged, and turns off when battery failure.
8. When the ac power is cut or when pressing the test button, the luminaire will operate in emergency mode.
9. The light source contained in this luminaire shall only be replaced by the manufacturer or his service agent or a similar qualified person.
10. Supply voltages within isolate supply before opening.
11. Do not insulation test over 500vdc.

REPLACING THE BATTERY

Access the battery by removing the product cover. Disconnect and remove battery. Replace battery as was previously installed. Allow a minimum 24 hours charging time before carrying out any discharge tests as per the requirements.

⚠ WARNING

The luminaire is connected to an unswitched active during normal operating conditions. When disconnected from the mains supply, the luminaire is powered by a LiFePO₄ battery operated inverter. Due to this, care should be taken when replacing either the battery.

ORDER INFORMATION

Order code

EV-LED-FIRE-SM-BASIC 18193
EV-LED-FIRE-SM-BASIC-B 14510

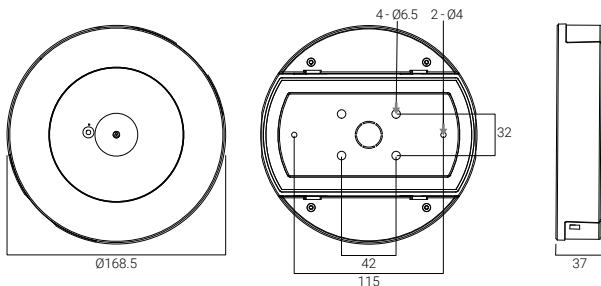
Description

Ledfire Basic Surface Mounted Emergency Luminaire, White
Ledfire Basic Surface Mounted Emergency Luminaire, Black

Carton QTY.

8
8

DIMENSIONS (MM)



SPECIFICATIONS

Voltage 220-240 V

Frequency 50 Hz

Max. ambient temp. 40°C

Class 2

Average Power Consumption 0.4 W

Duration 120 min

IP rating IP20

Mounting type Surface / rod mount

Wiring Hardwired

Max. Power Consumption 2 W

Battery spec 3.2V 1500mAh

Battery type LiFePO₄

Charging time 16 hours

Charger type Variable

BATTERY LIFE

- Battery minimum life is 4 years, and can only be used under emergency mode.
- Once the battery can no longer meet the required rated duration it must be replaced.
- To maintain the economic life of this product it is required that the battery be discharged and recharged at least once every 6 months. The battery life can be reduced if the battery is not discharged

