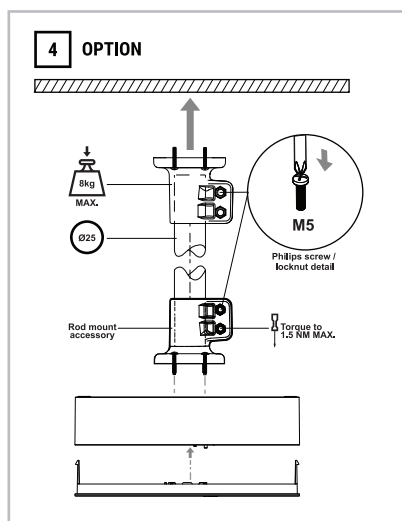
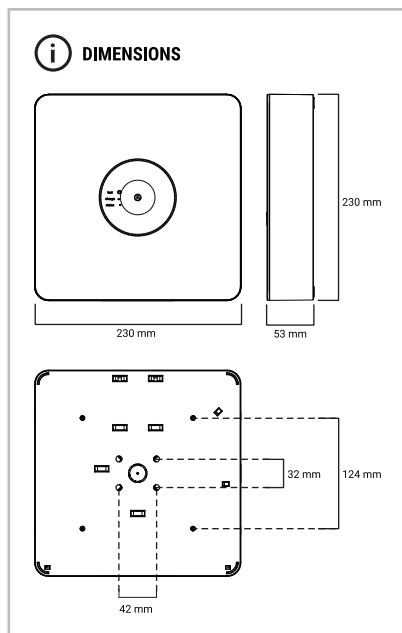
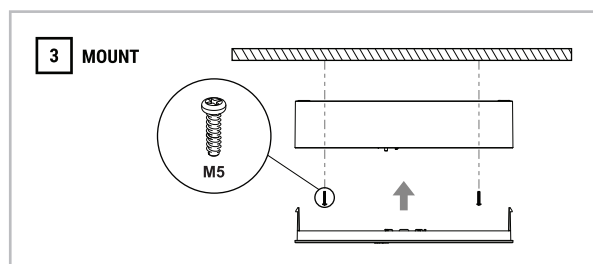
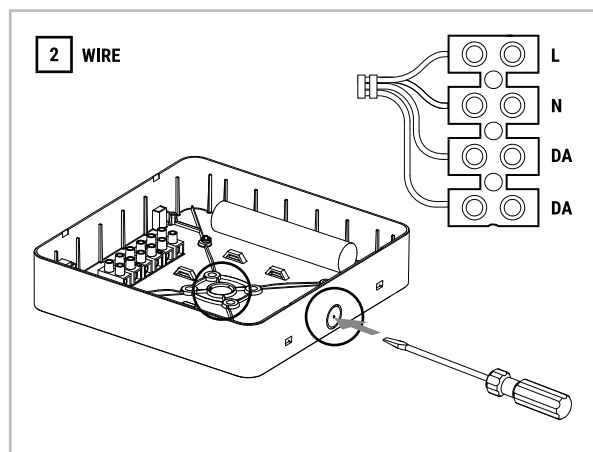
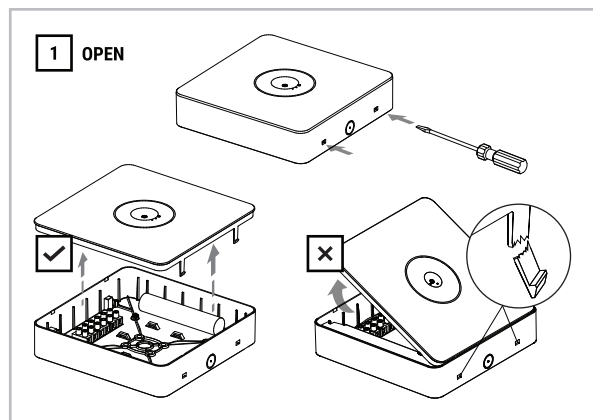


## EV-LEDFIRE-SM

## 01689



## ORDER INFORMATION

Order code		Description	Carton QTY.
EV-LEDFIRE-SM	01689	Ledfire Surface Mounted Emergency Luminaire, White -D63	4
EV-LEDFIRE-SM-B	01690	Ledfire Surface Mounted Emergency Luminaire, Black - D63	4

## SPECIFICATIONS

<b>Voltage</b>	220-240 V	<b>Rated duration</b>	3 hours	<b>Battery spec</b>	3.2V 1500mAh
<b>Frequency</b>	50 Hz	<b>IP rating</b>	IP20	<b>Battery type</b>	LiFePO <sub>4</sub>
<b>Ambient temp.</b>	0-40°C	<b>Mounting type</b>	Recessed	<b>Average Power Consumption</b>	0.4 W
<b>Class</b>	2	<b>Wiring</b>	Softwiring	<b>Max. Power Consumption</b>	2 W



## SAFETY WARNINGS

1. This product must only be installed by a suitably qualified person.
2. Before commencing installation turn off and isolate the electrical supply.
3. Supply voltages within product. Isolate supply voltages before opening or servicing.
4. There are no user serviceable parts. Do not attempt to service other parts as this will void the warranty.
5. As the installer, it is your responsibility to ensure you comply to all relevant building and safety codes. Refer to application standards for the relevant rules.
6. When the ac power is cut or when pressing the test button, the luminaire will operate in emergency mode.
7. The light source contained in this luminaire shall only be replaced by the manufacturer or his service agent or a similar qualified person.
8. Supply voltages within isolate supply before opening.
9. Do not insulation test over 500vdc.
10. The rechargeable device will operate normally after the removal of short circuit fault.
11. The luminaire is connected to an unswitched active during normal operating conditions.  
When disconnected from the mains supply, the luminaire is powered by a LiFePO4 battery operated inverter. Due to this, care should be taken when replacing the battery.