

AS2293.3 APPENDIX B

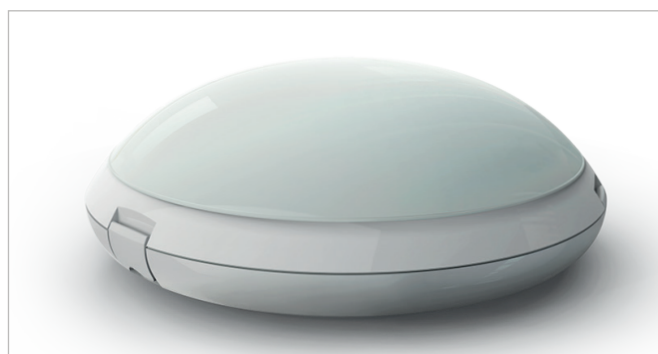
DECLARATION OF COMPLIANCE FOR GENERAL PURPOSE LUMINAIRES

(INFORMATIVE)

Manufacturer: Evolt Pty Ltd

Address: U5/105a Vanessa Street,

 Kingsgrove, NSW 2208, Australia



Last updated: 8 June 2021_V1.0

EMERGENCY ESCAPE LUMINAIRE / EXIT SIGN			
ORDER CODE	PRODUCT NUMBER	SKU	QTY
EV-PEARL-WP Circular Weatherproof	9336462018101	01810	4
EV-PEARL-WP-S Circular Weatherproof with sensor	9336462018149	01814	4
EV-PEARL-PRO-WP Circular Professional Weatherproof	9336462018118	01811	4
EV-PEARL-PRO-WP-S Circular Professional Weatherproof with sensor	9336462018156	01815	4

OPERATIONAL INFORMATION	
GENERAL	
Mains Voltage	230V~ 50Hz
Ambient temp.	0 to 40°C
Class	1
Diffuser type	Polycarbonate

SAFETY AND EML	
TEST	DESCRIPTION
Safety Standards	IEC 60598-1:2014+A1:2017 IEC 60598-2-1:1979/AMD1:1987 EN 60598-1:2015+A1:2018 / EN 60598-2-22:2014 EN 60598-2-1:1989 / EN 62493:2015 AS/NZS 60598.2.1:2014+A1:2016 AS/NZS 60598.1:2017+Amdt
EMC standards	AS/NZS CISPR 15: 2011

DECLARATION OF COMPLIANCE

On the basis of the test reports specified, I declare that the emergency escape luminaire/ exit sign described in this document complies with the requirements of AS2293.3.

Title: Managing Director **Date:** 27/10/20

Signature: *J Newell*

ektor.com.au
E: sales@evolt.com.au
P:1300 4EVOLT (438 658)

Ektor is dedicated to continuous product improvement. Datasheet is subject to change without notice, E&OE. Images are for illustrative purposes only.

NOTE: This declaration form should be completed in full. The completed form should be considered sufficient to verify compliance with AS 2293.3.