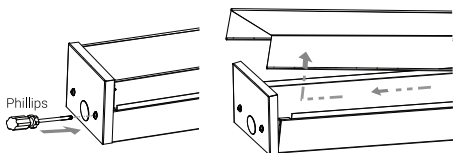


UMBRA PRO DIFFUSED EMERGENCY BATTEN

Remove the product from the box and inspect it for any damage. If you believe the product to be damaged or otherwise unsound, **DO NOT INSTALL** the product. Please pack it back into its box and return it to the place of purchase for replacement. If the product is satisfactory, proceed with the installation.

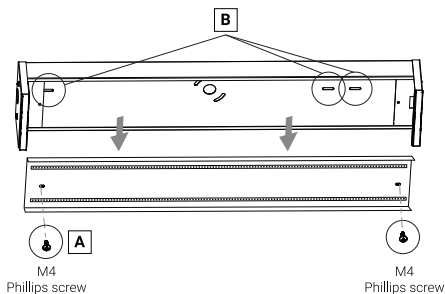
MOUNTING

1. Remove cover by first loosening the end cap screws and pulling the end cap carefully outward. The cover can then be removed by sliding out from one side before lifting up. It may be necessary to loosen both ends.

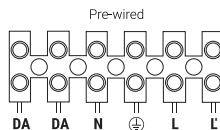


2. With diffuser detached unscrew two screws (A) holding the gear tray in place and remove gear tray.

Mount batten onto surface using mounting holes (B), use appropriate fasteners.



3. Terminate the cables into the terminal block ensuring the correct polarity is observed. Ensure all conductors are fully sleeved and insulated.



Notes:

- L' wiring is optional, see Standalone configuration table on page 3
- DA (DALI) wiring is optional, only required when using a DALI control system

4. Refit gear tray, taking care that cables do not become trapped or pinched.
5. Re-assemble diffuser and end caps.



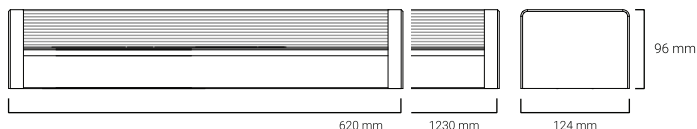
SAFETY WARNINGS

1. This product must only be installed by a licensed electrician.
2. Before commencing installation turn off and isolate the electrical supply.
3. Risk of accidental contact with live parts. Do not energise with product open or disassembled.
4. Supply voltages within product. Isolate supply voltages before opening or servicing.
5. As the installer, it is your responsibility to ensure you comply to all relevant up to date building and safety codes and as/nzs 3000 wiring rules. Refer to application standards for the relevant rules.
6. The light source of this luminaire is not user replaceable; when the light source reaches end of life the whole luminaire shall be replaced.
7. As the installer, it is your responsibility to ensure you comply to all relevant building and safety codes for example the latest versions of the bca, as/nzs 3000. Refer to application standards for the relevant rules.
8. DALI is not SELV and as such should be treated as LV.



**WARNING: CAUTION -
RISK OF ELECTRIC SHOCK**

DIMENSIONS



SPECIFICATIONS

Voltage	230V~	Emerg. Class	C0:D40 C90:D25 (600mm)	Control system	DALI-2
Frequency	50Hz		C0:D50 C90:D25 (1200mm)	DALI line current	2 mA
Class	I	Duration	90 / 120 min	Battery Type	LiFePO4
Working Temp. Range	0 - 40°C	IP Rating	IP20	Battery Capacity	6.4V 1500mAh
CRI	>80	Sdcm	<3	Battery Code	01302
CCT	3000K - 6500K	Lifetime	L70 B10 (17K) >100,000 Hrs	Charging Time	16 Hours
Mounting Type	Surface Mounted	Warranty	3 Years	Charger Type	Variable
Wiring	Terminal Block				

TOTAL POWER CONSUMPTION (TPC)

Model	Maintained (Lamp on)		Non-maintained (Lamp off)	
	Avg.	Max.	Avg.	Max.
EV-UMBRA-PRO-DIFF-600-EM (12234)	20W	24W	<0.5W	3W
EV-UMBRA-PRO-DIFF-600-EM-S (12236)	20W	24W	<0.5W	3W
EV-UMBRA-PRO-DIFF-1200-EM (12238)	33W	36W	<0.5W	3W
EV-UMBRA-PRO-DIFF-1200-EM-S (12240)	33W	36W	<0.5W	3W

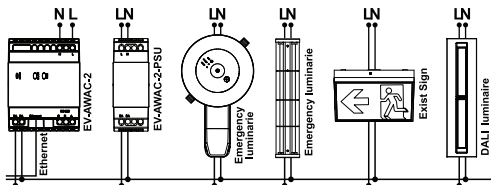
600MM SPACING TABLE (DISTANCE BETWEEN FITTINGS)

Lx	Classification	Mounting Height (m)															
		2.1	2.4	2.7	3.0	3.3	3.6	4.0	4.5	5.0	6.0	7.0	8.0	9.0	10	15	20
0.2	D40	11.5	13.2	14.8	16.5	18.1	19.5	20.1	20.7	21.2	22.1	22.6	23.0	23.1	23.0	0.0 ⁴	N/A
	D25	11.5	13.2	14.8	15.7	16.1	16.4	16.8	17.3	17.6	18.1	18.3	18.2	17.8	17.2	0.0 ⁴	N/A

1200MM SPACING TABLE (DISTANCE BETWEEN FITTINGS)

Lx	Classification	Mounting Height (m)*															
		2.1	2.4	2.7	3.0	3.3	3.6	4.0	4.5	5.0	6.0	7.0	8.0	9.0	10	15	20
0.2	D50	11.5	13.2	14.8	16.5	18.1	19.8	21.8	22.5	23.1	24.1	24.9	25.4	25.7	25.8	23.6	0.0 ⁴
	D25	11.5	13.2	14.8	15.7	16.1	16.4	16.8	17.3	17.6	18.1	18.3	18.2	17.8	17.2	0.0 ⁴	0.0 ⁴

SYSTEM OVERVIEW



*Care should be taken when spacing luminaires at the distance indicated by shaded regions to ensure that conformance to AS/NZS 2293.1:2018 Clause 4.3 is maintained (e.g. maximum 500m² per emergency luminaire).

PROGRAMMING & DEFAULT STANDALONE CONFIGURATION

Sensor mode*	Presence mode. The sensor will automatically turn lights on when movement is detected.
Sensor idle-time*	14 minutes after the last presence was detected
Sensor warn-time*	Light is switched off after 1 minute with no movement detected.
Sensor warn-level*	Lights are dimmed to 1 % after the idle-time has expired.
L'	Absolute input: L' active - maintained LED on L' off

Standalone mode is automatically disabled after addressing either the ECD / ECG short address via DALI or setting the ECD operating mode to 0.

*Sensor models only.

REPLACING THE BATTERY

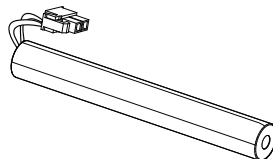
Access the battery by removing the gear tray.
Disconnect and remove battery. Replace battery as was previously installed. Battery can be connected in one direction only, do not force. Allow a minimum 24 hours charging time before carrying out any discharge tests as per the requirements in AS/NZS 2293.

⚠ WARNING

The Ektor Umbra Pro Diff Emergency Luminaire is connected to an unswitched active during normal operating conditions. When disconnected from the mains supply, the Umbra Pro Diff is powered by a LiFePO4 battery operated inverter. Due to this, care should be taken when replacing the battery.

BATTERY LIFE

To maintain the economic life of this product it is required that the battery be discharged and recharged at least once every 6 months. The battery life can be reduced if the battery is not discharged as per the requirements of AS/NZS 2293 or an equivalent standard. Increasing the number of duration tests above that as defined in AS/NZS 2293 or an equivalent standard can have a positive effect on the battery performance as long as 12 discharge cycles per year is not exceeded. The recharging device will operate normally after removal of short circuit fault.



STATUS CHARGE LEDS (GREEN)

Indicator	Description
Illuminated	Device is in normal mode
Slow flash	Test switch button has been pressed/held for any amount of time, and is not in any self tests
OFF	Battery failure
1x flash	A duration test is pending, the device is not in any self test but set to normal mode
2x flash	Lamp failure
4x flash	Interface failure
5x flash	No DALI address
7x flash	Device performing function test. The test was triggered by a DALI command or function test interval
9x flash	Device either doesn't support maintained mode or doesn't support the selected duration setting

ORDERING INFORMATION

SKU	Product code	Product number	Description
12233	EV-UMBRA-PRO-DIFF-600	9336462122334	Professional 600mm Diffused Batten
12234	EV-UMBRA-PRO-DIFF-600-EM	9336462122341	Professional 600mm Diffused Emergency Batten
12235	EV-UMBRA-PRO-DIFF-600-S	9336462122358	Professional 600mm Diffused Batten with Sensor
12236	EV-UMBRA-PRO-DIFF-600-EM-S	9336462122365	Professional 600mm Diffused Emergency Batten with Sensor
12237	EV-UMBRA-PRO-DIFF-1200	9336462122372	Professional 1200mm Diffused Batten
12238	EV-UMBRA-PRO-DIFF-1200-EM	9336462122389	Professional 1200mm Diffused Emergency Batten
12239	EV-UMBRA-PRO-DIFF-1200-S	9336462122396	Professional 1200mm Diffused Batten with Sensor
12240	EV-UMBRA-PRO-DIFF-1200-EM-S	9336462122402	Professional 1200mm Diffused Emergency Batten with Sensor

ACCESSORIES AND SPARE PARTS

SKU	Product code	Product number	Description
01302	EV-1500mAh-6.4V-LiFePO ₄	9336462013021	Battery Stick 1500mAh 6.4V 2 Cell LiFePO ₄ Battery

WARRANTY STATEMENT

Ektor products are distributed in Australia and New Zealand by Evolt Pty Ltd (Evolt). The Australian Consumer Law as well as other Australian laws guarantee certain conditions, warranties and undertakings, and give you other legal rights, in relation to the quality and fitness for purpose of Ektor products sold in Australia. In Australia, our goods come with guarantees that cannot be excluded under the Australian Consumer Law. You are entitled to a replacement or refund for a major failure and compensation for any other reasonably foreseeable loss or damage. You are also entitled to have the goods repaired or replaced if the goods fail to be of acceptable quality and the failure does not amount to a major failure. What constitutes a major failure is set out in the Australian Consumer Law. Nothing in this Warranty purports to modify or exclude the conditions, warranties and undertakings, and other legal rights, under the Australian Competition and Consumer Act and other Australian laws. Ektor products are warranted in Australia for a period of 3 years from the date of delivery of the product, provided that the products are properly stored, installed, used and maintained in accordance with the instructions contained within their manual. Products that have been altered in any way or used other than in accordance with their instructions are not covered by this warranty.

This warranty is not transferable and is valid only in the hands of the purchaser of the product. The warranty does not cover Ektor products other than those purchased from Evolt. Proof of purchase must be provided to Evolt with any warranty claim. Evolt recommends that the purchaser attaches their proof of purchase to their product manual. Evolt's total liability under this warranty is limited to the cost of repair or replacement of the faulty product. Evolt may satisfy its obligations under this warranty in full by repair or replacement of a faulty product. This warranty does not apply to consumable items such as lamps or batteries or other items that can be classified as consumable. For the avoidance of any doubt, any and all warranties or conditions which are not guaranteed under the Australian Competition and Consumer Act or the Australian Competition and Consumer Regulations 2010 and which are not expressly included in this Warranty as additional warranties or conditions are excluded. This Warranty does not cover loss or damage caused by wear and tear, misuse, incorrect installation or operation, failure to clean and maintain, incorrect voltage or non-authorised electrical connections, adverse external conditions (such as power surges and dips, acts of God, exposure to heat, corrosion, insect or vermin infestation), use of non-authorised or defective parts or globes, or to items that have been repaired other than by Evolt or a repairer approved by Evolt.

TECHNICAL SUPPORT AND TROUBLESHOOTING

For further assistance in using this product, consult your nearest wholesaler or Evolt Pty Limited